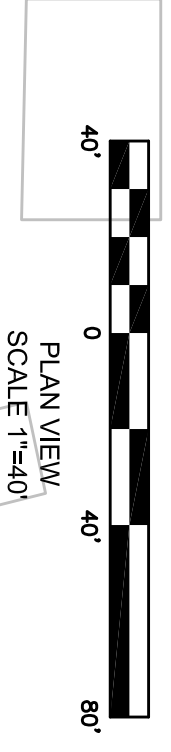
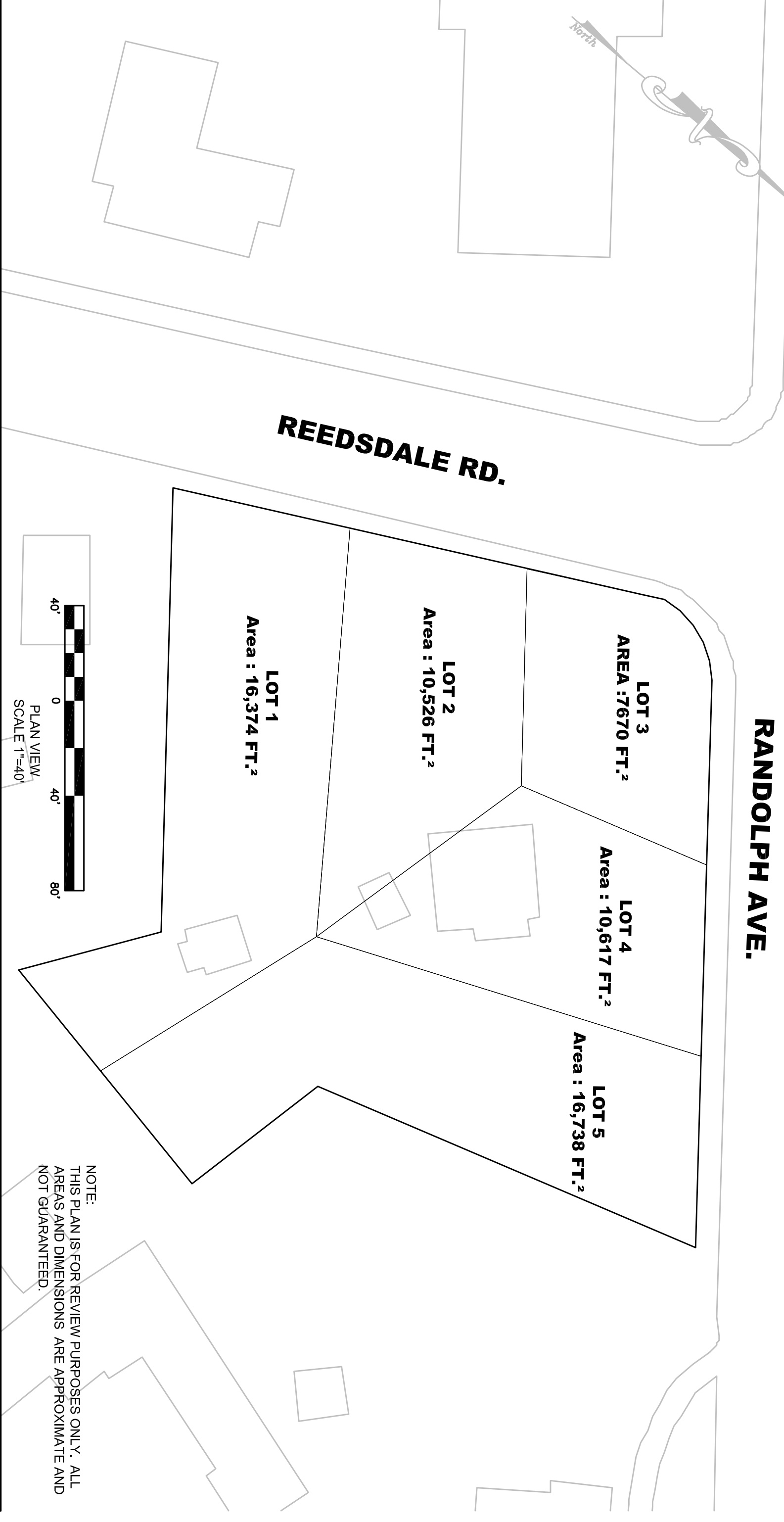
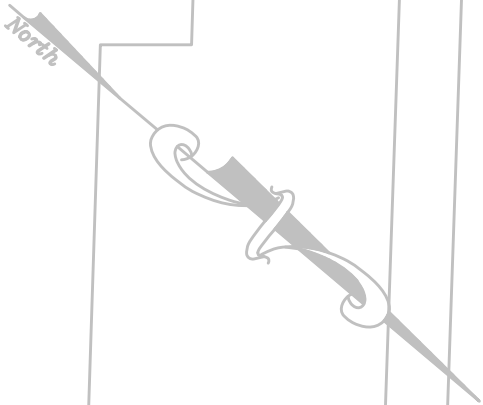




TOWN OF MILTON
 DEPARTMENT OF PUBLIC WORKS
 629 RANDOLPH AVENUE MILTON, MA
 TEL: (617) 898-4900 FAX: (617) 698-1290

RANDOLPH AVE.

REEDSDALE RD.



NOTE:
 THIS PLAN IS FOR REVIEW PURPOSES ONLY. ALL
 AREAS AND DIMENSIONS ARE APPROXIMATE AND
 NOT GUARANTEED.

NO.	DATE	REVISIONS	MADE BY	CHECKED BY

SHEET TITLE: **CONCEPTUAL PARCEL**
SUBDIVISION
 597 RANDOLPH AVE.
 SCALE: 1"=40'