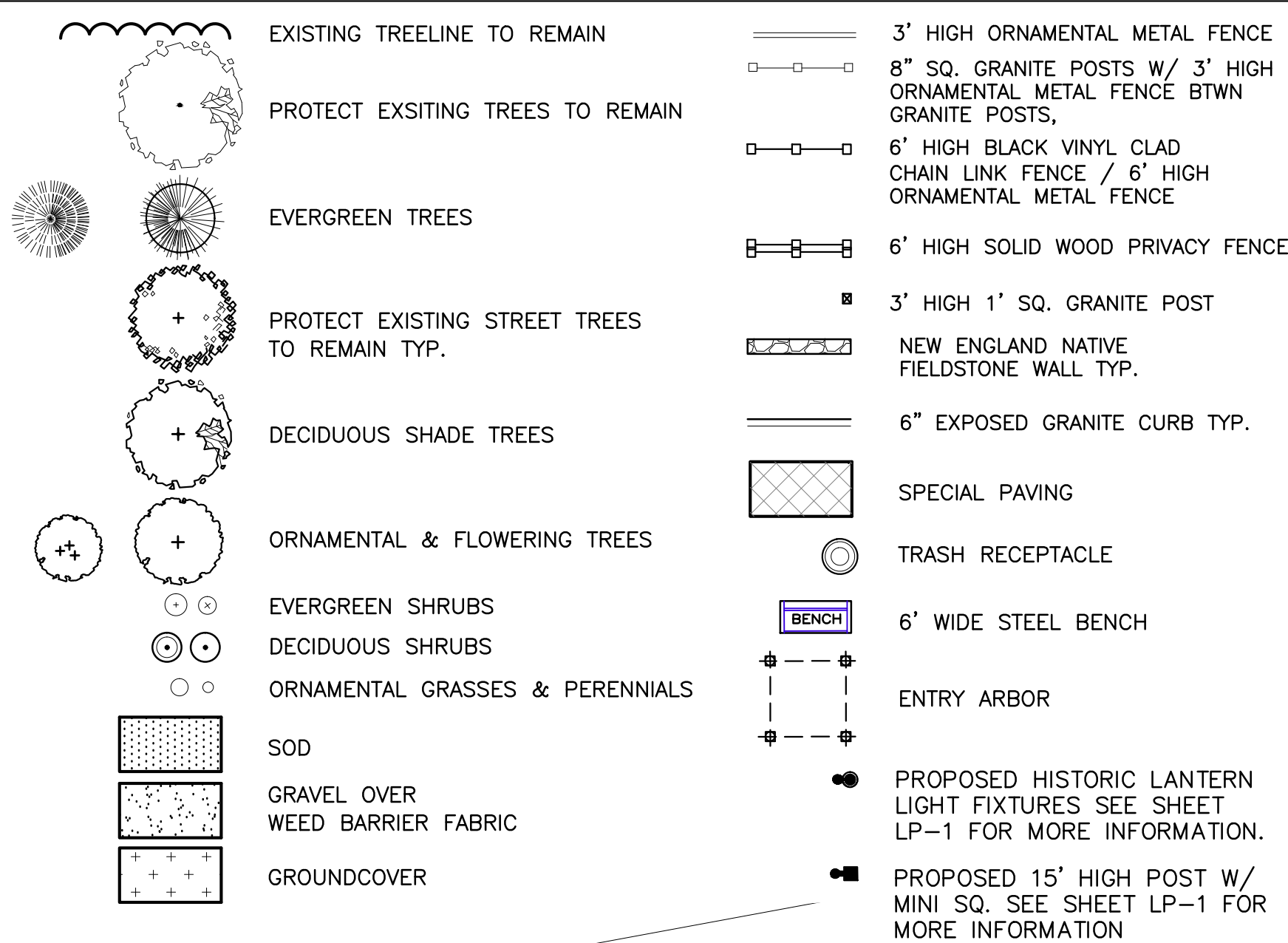


OVERALL PLANT MATERIAL LIST						
SYM.	QTY.	BOTANICAL NAME	COMMON NAME	SIZE	ROOT	REMARKS
<b>EVERGREEN TREES</b>						
ACc	5	ABIES CONCOLOR	WHITE FIR	8'-10"	B&B	NATURAL SHAPE, UNSHEARED
PPG	2	PICEA PUNGENS 'GLAUCA'	COLORADO BLUE SPRUCE	8'-10"	B&B	NATURAL SHAPE, UNSHEARED
<b>DECIDUOUS AND ORNAMENTAL TREES</b>						
AC	2	AMELANCHIER x 'CUMULUS'	CUMULUS SERVICEBERRY	8'-10"	B&B	MULTI-STEM CLUMP
GT	5	GLEDITSIA T. 'SKYLINE'	SKYLINE HONEYLOCUST	3'-3 1/2"	B&B	6' HIGH BRANCHING
BNC	3	BETULA NIGRA 'HERITAGE'	HERITAGE RIVER BIRCH	8'-10"	B&B	(3) STEM TIGHT CLUMP
FS	2	FAGUS S. 'RED OBELISK'	RED OBELISK BEECH	3'-3 1/2"	B&B	SINGLE STEM SPECIMEN
PC	5	PYRUS CALLERYANA 'NEW BRADFORD'	NEW BRADFORD FLOWERING PEAR	3'-3 1/2"	B&B	6' HIGH BRANCHING
LS	3	LIQUIDAMBAR STYRACIFLUA	AMERICAN SWEETGUM	4'-4 1/2"	B&B	6' HIGH BRANCHING
<b>SHRUBS</b>						
AV	3	AZALEA VISCOSUM	SWAMP AZALEA	3'-3 1/2"	CAN	
BN	53	BUXUS S. 'NEWPORT BLUE'	NEWPORT BLUE BOXWOOD	2'-2 1/2"	B&B	CLIP TO HEDGE
CR	11	CLETHRA A. 'RUBY SPICE'	RUBY SPICE SUMMERSWEET	2'-2 1/2"	B&B	CLIP TO HEDGE
IGC	6	ILEX GLABRA 'COMPACTA'	COMPACT INKBERRY	2'-2 1/2"	B&B	CLIP TO HEDGE
IM	9	ILEX x. M. 'BLUE PRINCESS'	BLUE PRINCESS HOLLY	4'-5"	B&B	FEMALE
IMM	1	ILEX x. M. 'BLUE PRINCE'	BLUE PRINCE HOLLY	4'-5"	B&B	MALE
JS	6	JUNIPERUS C. 'SARGENT'	SARGENT JUNIPER	18'-24"	B&B	
PJM	42	RHODODENDRON 'PJM'	PJM RHODODENDRON	3'-3 1/2"	B&B	
RC	12	RHODODENDRON 'C. GRANDIFLORUM'	LILAC CATAWBA RHODY	3'-3 1/2"	B&B	
RO	14	RHODODENDRON M. 'NOVA ZEMBLA'	NOVA ZEMBLA RHODY	3'-3 1/2"	B&B	
RO	15	RHODODENDRON M. 'OLGA MEZITT'	OLGA MEZITT RHODODENDRON	3'-3 1/2"	B&B	
RP	31	RHODODENDRON M. 'PURPLE GEM'	PURPLE GEM RHODODENDRON	18'-24"	B&B	
TD	15	TAXUS M. 'DENSIFORMIS'	DENSE SPREADING YEW	2'-2 1/2"	B&B	CLIP TO HEDGE
TG	6	TAXUS M. 'GREENWAVE'	GREENWAVE YEW	2'-2 1/2"	B&B	
RK	11	ROSA 'KNOCKOUT'	KNOCKOUT ROSES	2'-3"	B&B	
VC	1	VIBURNUM CARLESII	KOREAN ROSE VIBURNUM	3'-3 1/2"	B&B	
<b>PERENNIALS &amp; GROUNDCOVER</b>						
HH	15	HEMEROCALLIS 'HAPPY RETURNS'	'HAPPY RETURNS' DAYLILY	2 GAL.	POT	YELLOW
IS	26	IRIS SIBERICA 'CAESAR'S BROTHER'	'CAESAR'S BROTHER' IRIS	2 GAL.	POT	PURPLE
VM	53	VINCA MINOR	MYRTLE	#1	FLAT	(50) INDIVIDUAL VM/FLAT
PT	50	PACHYSANDRA TERMINALIS	PACHYSANDRA	#1	FLAT	(50) INDIVIDUAL PT/FLAT

**GRAPHIC LEGEND**

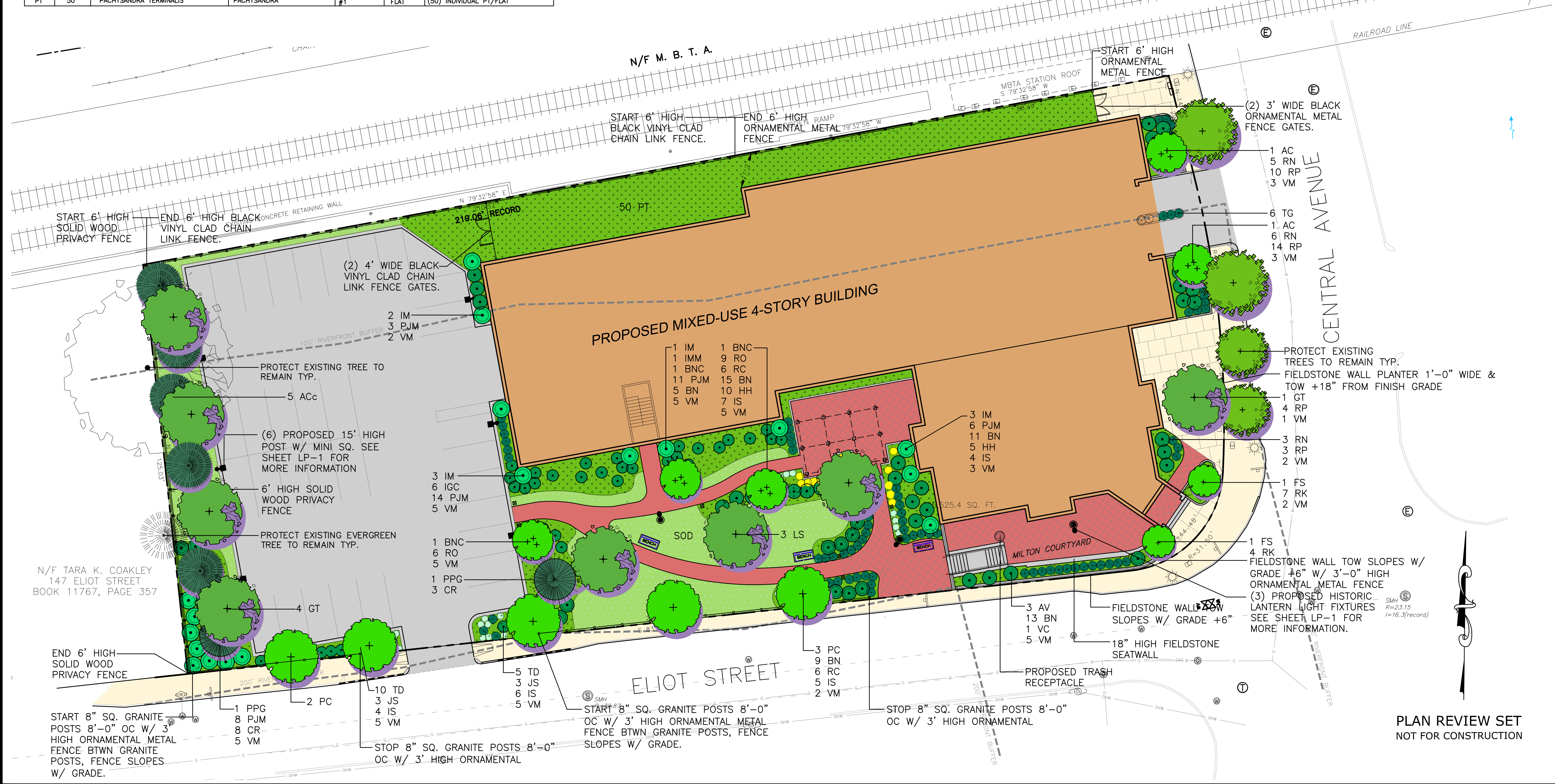


**GENERAL NOTES**

- All contractors shall inspect site prior to bidding to verify existing conditions for themselves.
- The Contractor shall supply all plant material in quantities sufficient to complete the planting shown on the drawings.
- All plant material shall conform to the guidelines established by "The American Standard for Nursery Stock", published by the American Association of Nurserymen, Inc. ANSI Z60.1-Current Ed.
- All plants to be balled in burlap or container grown. No plastic burlap.
- All plants to be approved by the Landscape Architect.
- Stake location of all proposed plant material for approval of Landscape Architect prior to commencement of planting.
- The landscape contractor shall guarantee all plant materials for one (1) full year from date of acceptance.
- Heal all construction scars with naturalized grass, lawn or mulch as indicated by drawings and/or Landscape Architect.

**LANDSCAPE NOTES:**

- LOAM DEPTHS SHALL BE AS FOLLOWS:
- LAWN AREAS - 6" ROLLED THICKNESS
  - PLANT BEDS - 1'-0" LOAM DEPTH IN THE PLANTED AREA WITH 2" MULCH.
  - GRAVEL AREA - 4" COMPACTED MIN.
  - ISOLATED PLANTED ISLANDS - 1'-0" LOAM DEPTH
- FOR LIGHTING PLAN  
SEE SHEET LP-1



GENERAL NOTES:

SEAL:

REVISIONS:

No.	DATE	REVISION
2	07/20/12	REVISED
1	12/08/11	REVISED

PROJECT TITLE:

**LANDSCAPE PLAN FOR HENDRIES BUILDING MILTON, MA**

PREPARED FOR: APPLICANT

**JEREMIAH CONNELLY, TRUSTEE  
CARRICK REALTY TRUST  
BOSTON, MA**

PREPARED BY:

**WILLIAM FLEMING ASSOCIATES  
INCORPORATED**

LANDSCAPE ARCHITECTURE  
PLANNING

5 Central Square  
Third Floor  
Stoneham, MA. 02180  
T 781 438 3088  
F 781 438 3611  
E wfa@williamfleming.com

**The DECELLE Group**  
PROFESSIONAL ENGINEERS PROFESSIONAL SURVEYORS

140 INDEPENDENCE AVENUE QUINCY, MA 02169  
(817) 405-6100 (C) (817) 405-6101 (F)

DATE: JULY 1, 2010

FIELD WORK BY: OTHERS CHECKED BY: WFA

COMP./DESIGN: WFA SCALE: 1" = 10'

JOB NUMBER: 128,289 SHEET: L1 OF L5

PLAN REVIEW SET  
NOT FOR CONSTRUCTION