

# The Neponset River Trail

## Central Avenue to Mattapan Square



Public Meeting  
7:30 pm – 9:00 pm Monday, May 17, 2010  
Foley Senior Residences dining room  
249 River Street in Mattapan



# **Commonwealth of Massachusetts**

**Governor**

Deval L. Patrick

**Lieutenant Governor**

Timothy Murray

**Energy and Environmental Secretary**

Ian A. Bowles

**Department of Conservation and Recreation Commissioner**

Richard K. Sullivan, Jr.



## **DCR MISSION STATEMENT**

***To protect, promote and enhance our common wealth of natural, cultural and recreational resources.***

# Consultant Design Team:

Crosby Schlessinger Smallridge, LLC – Landscape Architects  
Deneen Crosby – Principal-in-Charge/Project Manager

AECOM – Structural Engineers  
Bob Hajjar – Project Engineer

BSC Group – Civil Engineers  
Peter Reed – Project Engineer

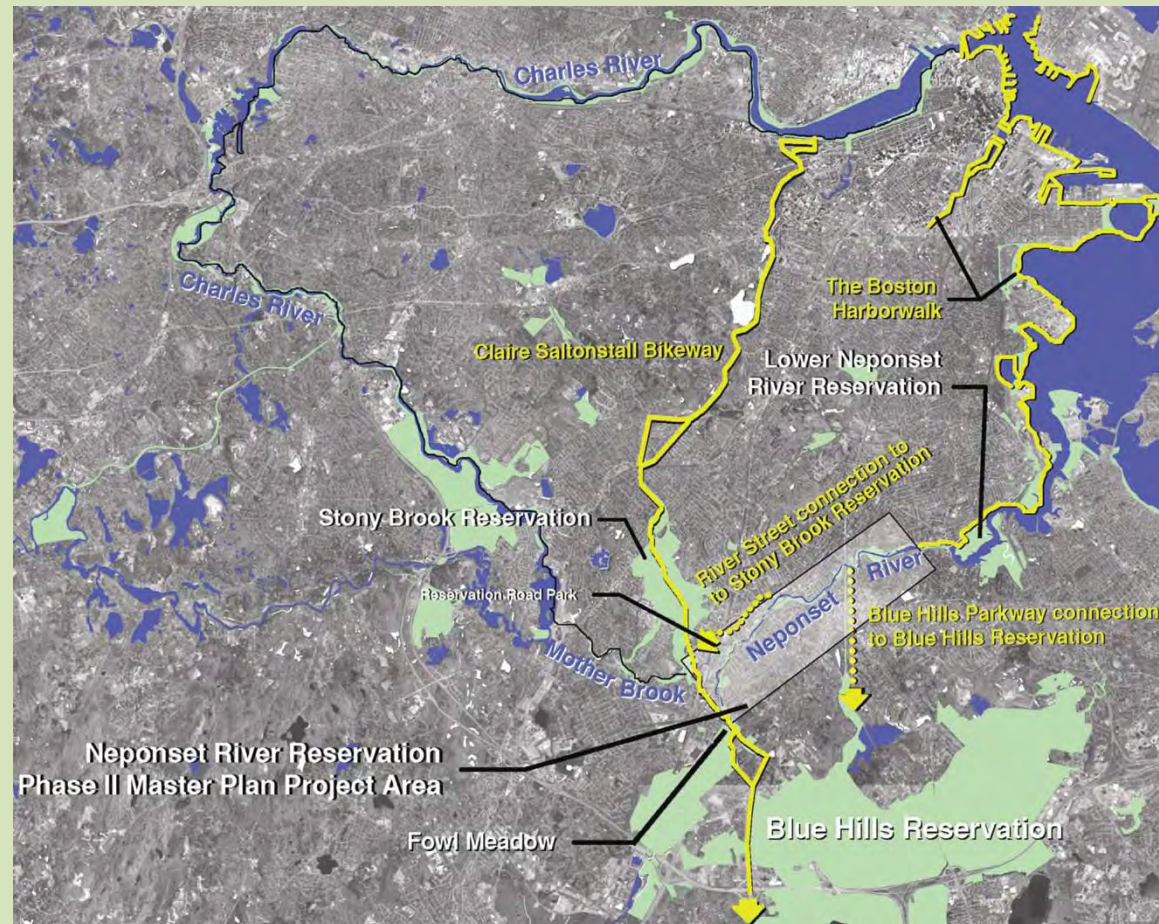
Epsilon – Permitting  
Mike Howard – Project Manager

Nitsch Engineering – Surveyors  
Paul LeBaron – Project Surveyor

# Neponset River Reservation

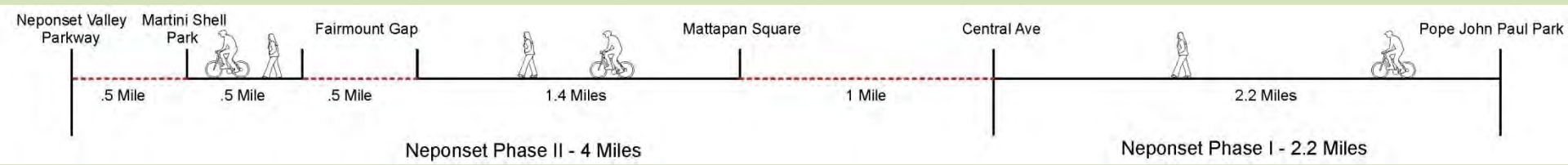
## Regional Connections

- Lower Neponset River Reservation – Phase I
- Upper Neponset River Reservation - Phase II
- Upper Neponset River Master Plan - 2006
- Neponset River Esplanade Project – Under Construction
- Esplanade Extension Project – Under Design
- Central Ave to Mattapan Square – Under Design



# Neponset River Reservation

## Regional Trail – Filling in the Gaps

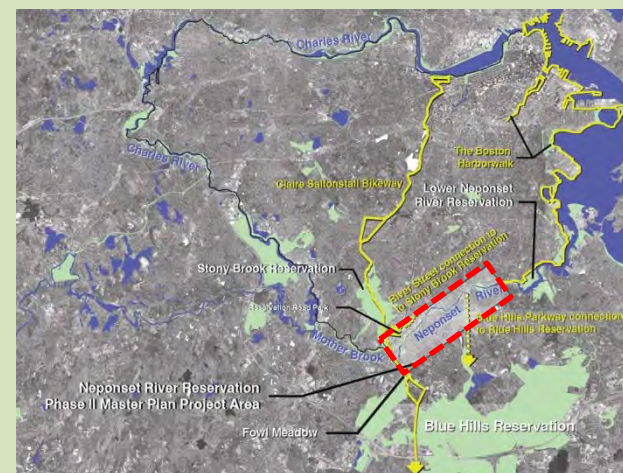
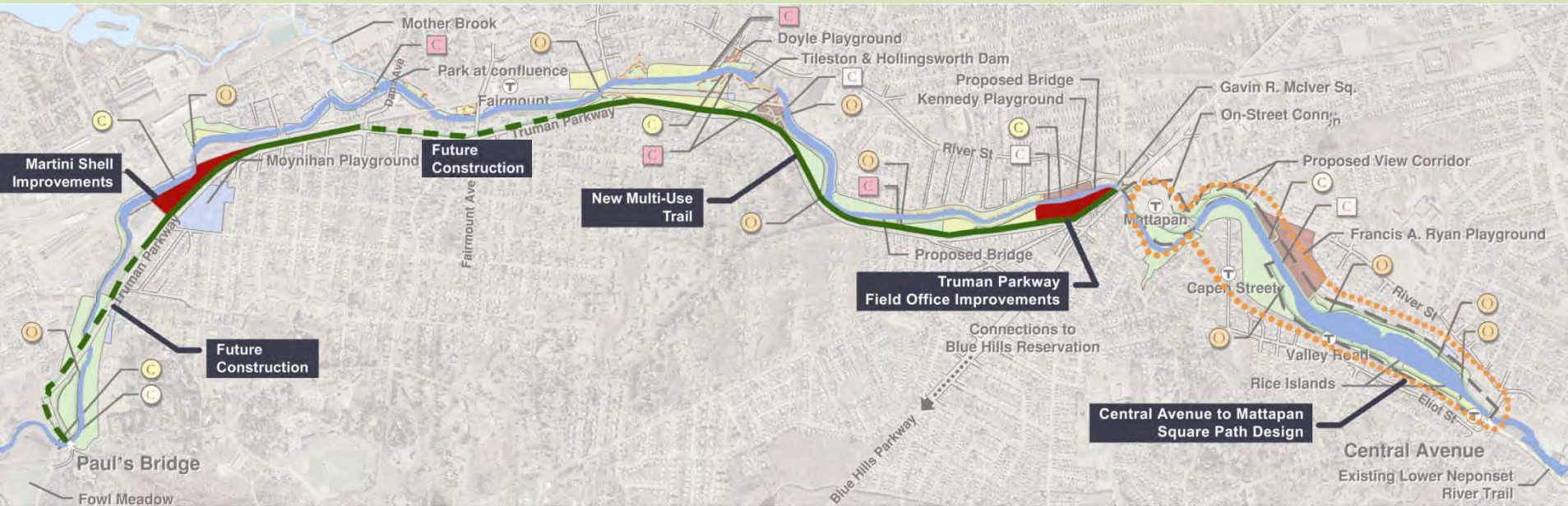


?



# Upper Neponset River Master Plan

## Completed 2006



# Project Goals

- Continue development of a greenway corridor and a continuous multi-use pathway system through the reservation
- Connect to a regional pathway system
- Provide access to the river's edge
- Improve Management and Operation of the Neponset River Reservation by providing staff with continuous access to the Neponset River Reservation
- Ensure public safety
- Provide universal access





# Project Scope

- Construct a 10' wide multi – use path along the Neponset River
- Provide universal access along the Neponset River
- Install trail signage
- Install fencing for security
- Install boardwalk or bridge connections



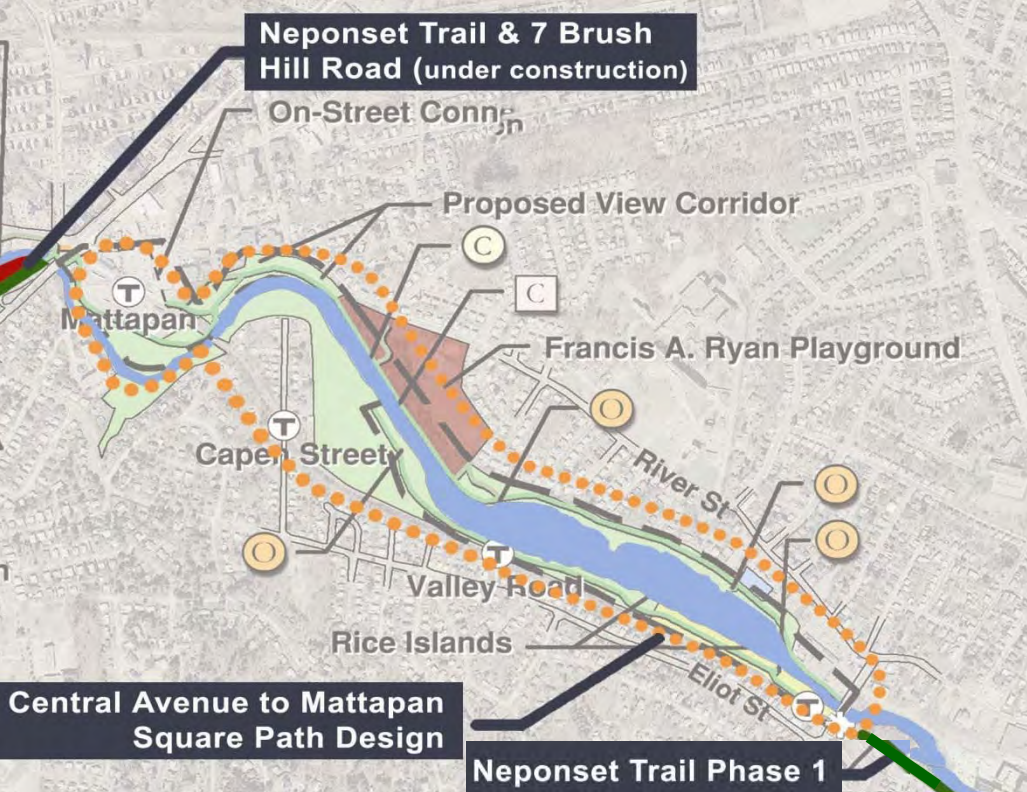
# Meeting Objectives

- Present alternatives and recommendations
- Solicit input on alternatives
- Discuss next steps



# Project Site – Central Ave to Blue Hill Ave

## The Missing Link



# Process

## DCR Resource Based Planning

1. Survey property lines and topography
2. Delineate wetlands and large tree masses
3. Prepare conceptual pathway alignments
4. Conduct archaeological sensitivity study of proposed alignments

# Archaeology

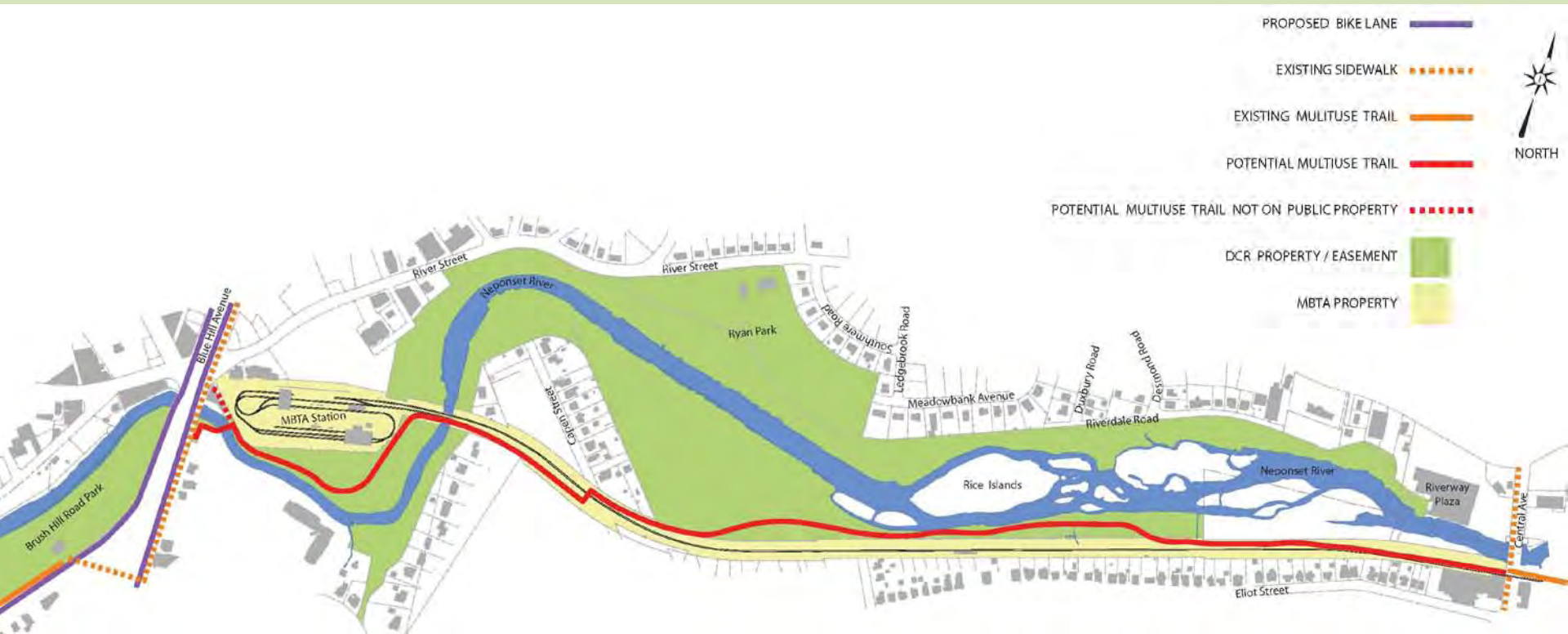
- Avoidance is the preferred treatment for most archaeological resources.
- If a viable alternative exists that will avoid known or anticipated resources, it should be pursued.
- Avoid testing if possible because the process of testing for site examination can damage the integrity of the resource and valuable information may be lost forever.

## **DEFINITION: Conservation Archaeology**

*sensitive areas and sites should be preserved for future generations when new technologies will likely result in new techniques that capture more vital information from less destructive methods.*

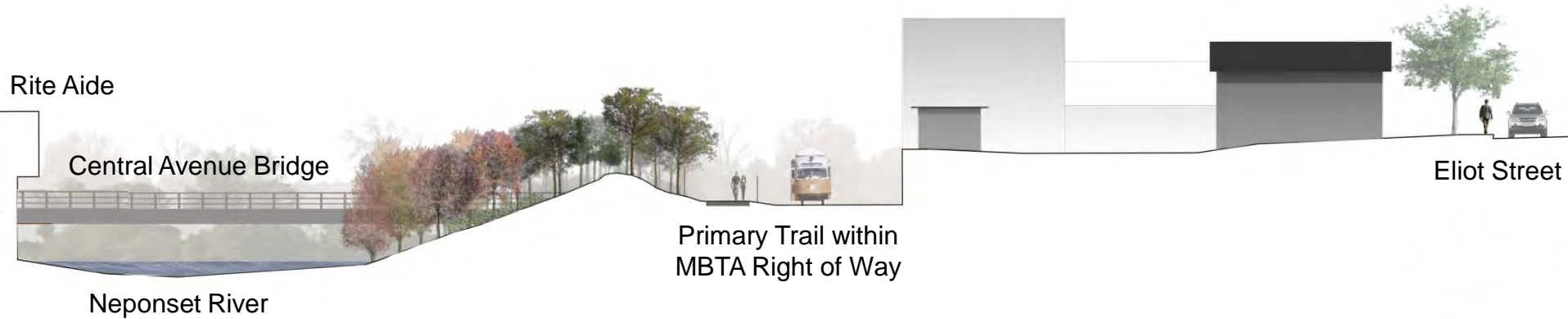
# OPTION A

## Primary Trail - South of Neponset River



# OPTION A

## Southern Trail - Section



- Continues the existing trail across Central Avenue
- Follows the trolley line for safety
- Exists within MBTA Right of Way
- Separated from houses by railway



# OPTION A

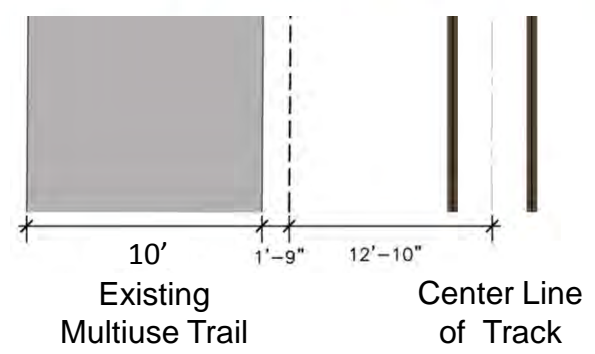
## Southern Trail - Section Detail



Proposed Trail Section



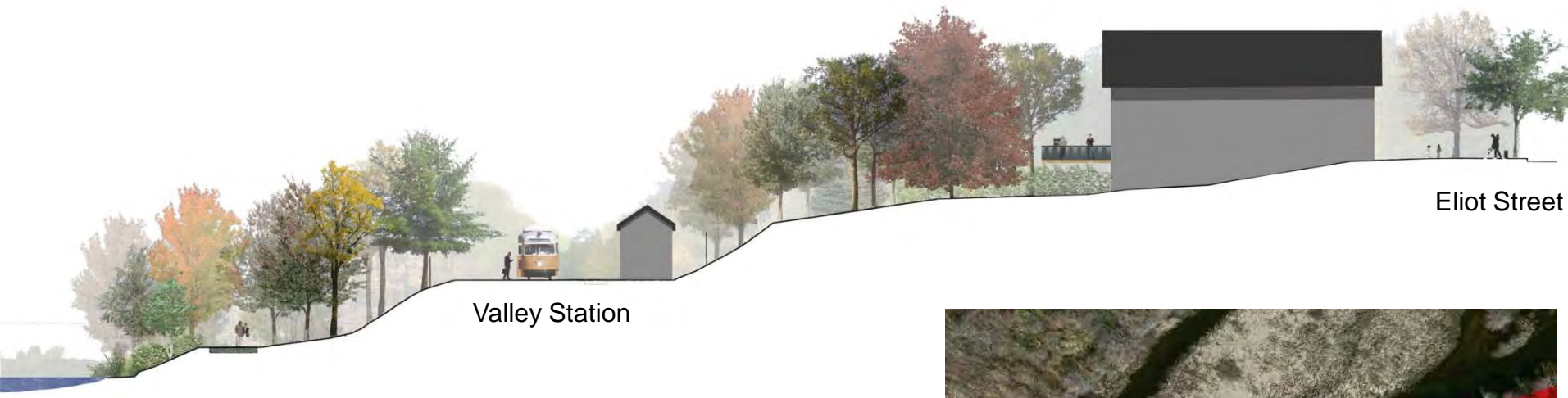
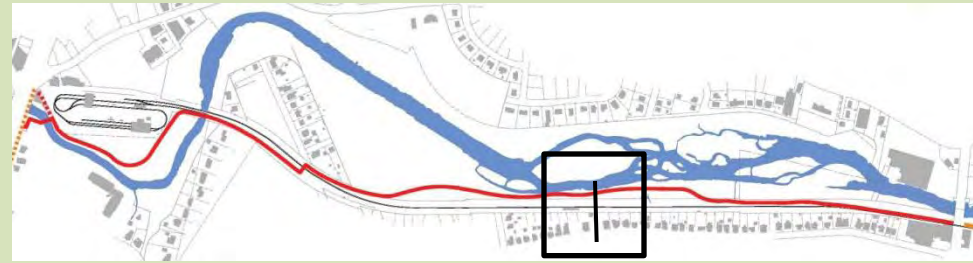
Existing Trail Dimensions



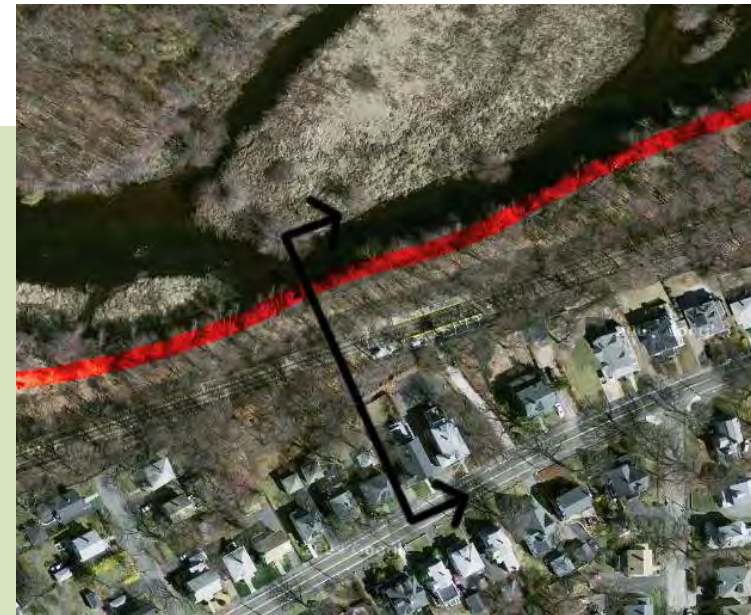


# OPTION A

## Southern Trail – Section

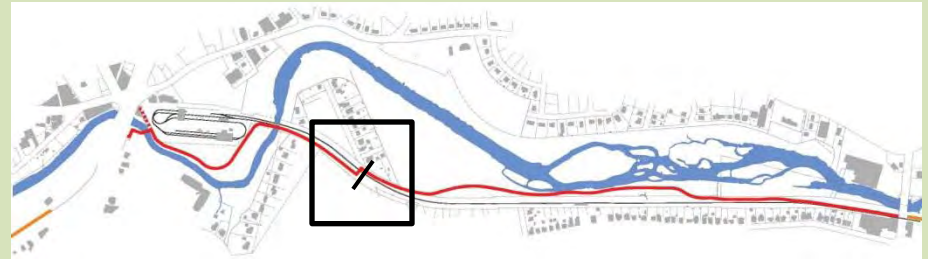


- Follows the river
- Separated from housing by railway and grade change
- Access at Central Ave and Capen Street trolley stations
- Provide fencing for safety and security as needed



# OPTION A

## Southern Trail - Section



- Visible from trolley and trolley stations
- Access at Central Ave and Capen Street
- Separated from housing by landforms walls and fencing



# OPTION A

## Southern Trail – River Crossing



# OPTION A

## Southern Trail – Mattapan Square



# OPTION A

## Southern Trail – Mattapan Square



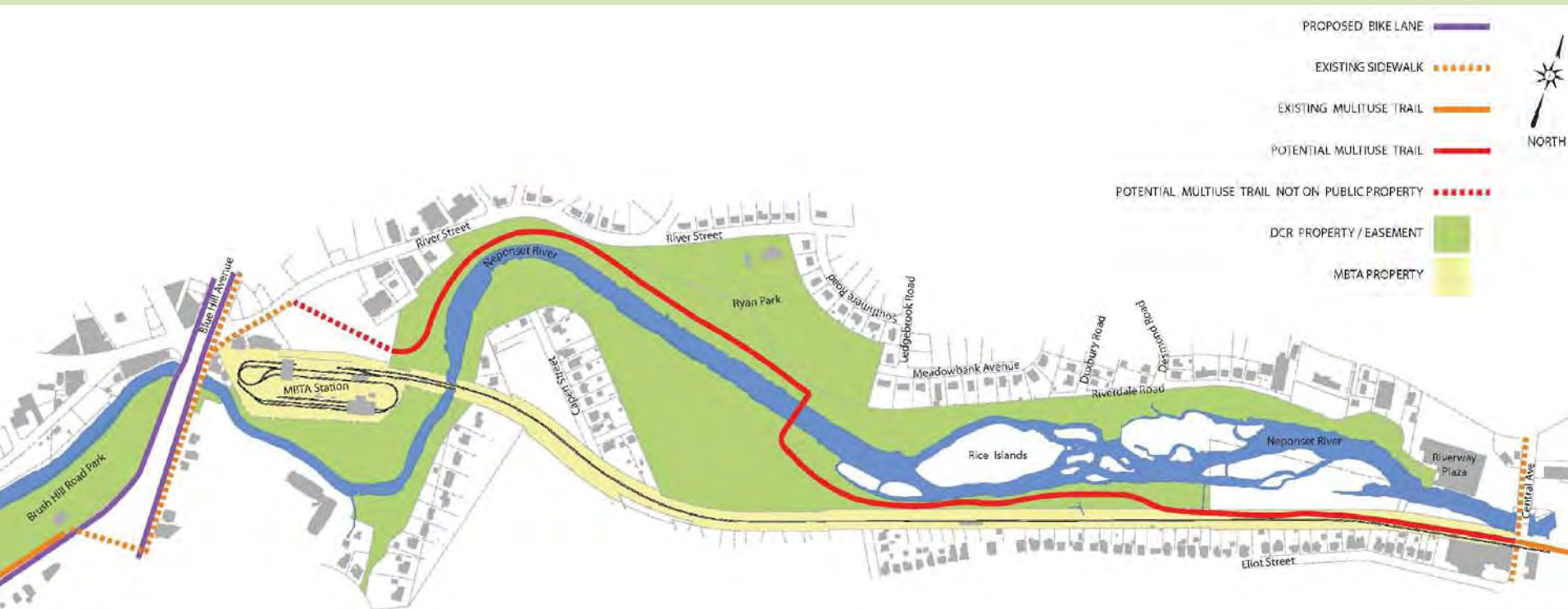
# OPTION A

## Southern Trail – Mattapan Square



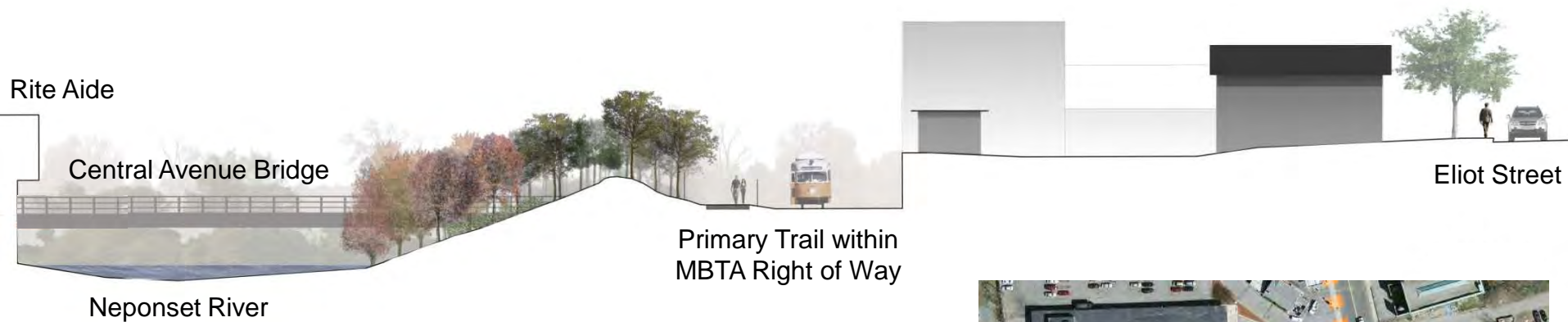
# OPTION B

## Primary Trail South and North of Neponset River



# OPTION B

## South/North Trail - Section



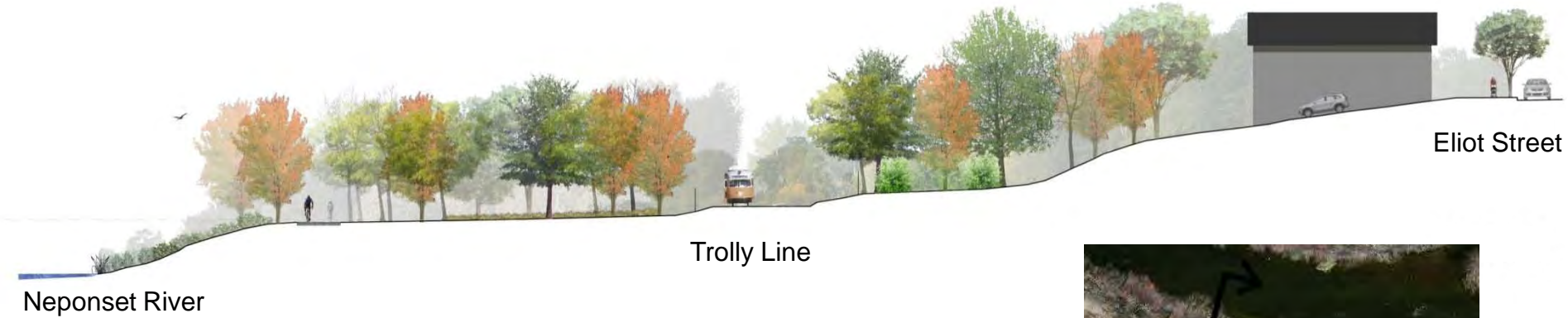
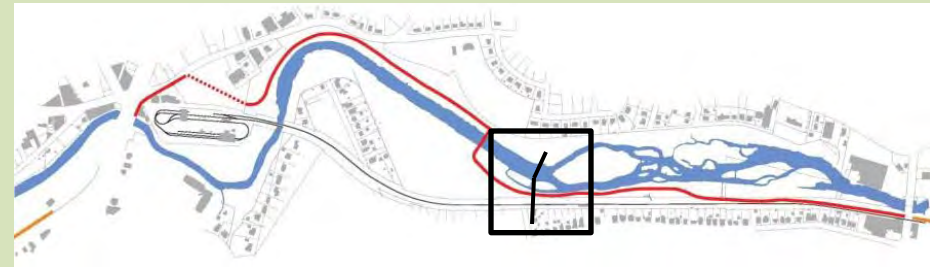
- Continues the existing pathway across Central Ave
- Follows along the trolley line for safety
- Exists within the MBTA right of way on southern side of river
- Separated from houses by railway on southern side of river





# OPTION B

## South/North Trail - Section

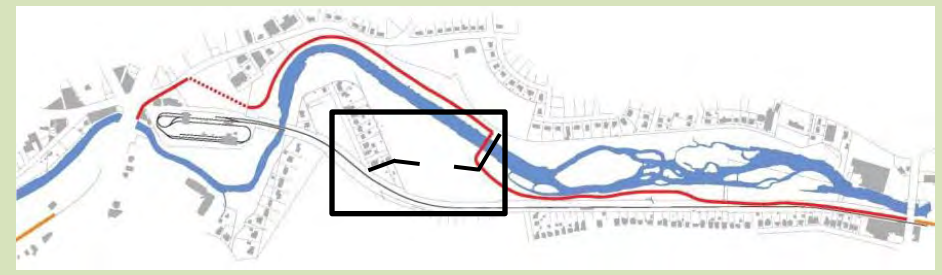


- Located next to the river for scenic views
- Separated from housing by railway
- Travels through open meadows



# OPTION B

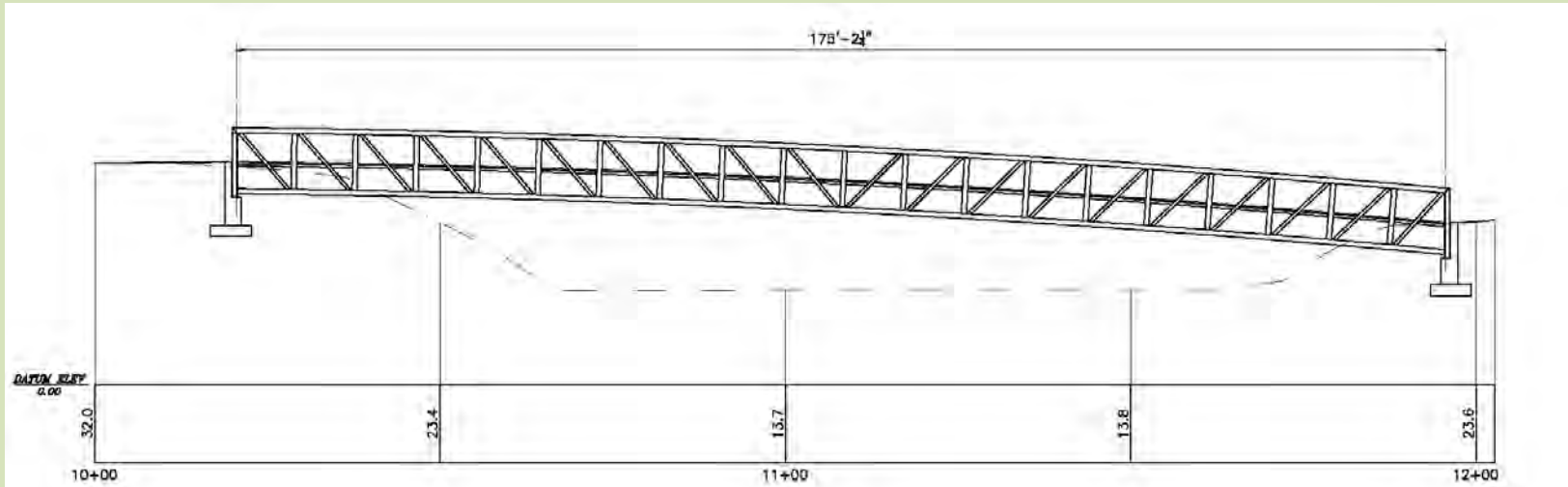
## South/North Trail - Section



- Bridge to cross the Neponset River
- Separated from houses by fencing and vegetation



# Bridges



# OPTION B

## South/North Trail - Section



- Follows alignment of existing pathway
- Separated from housing by River Street
- Exits through MBTA Station and bus way and then onto narrow River St
- Disturbs archaeologically sensitive areas
- Requires tree removal



# OPTION B

## South/North Trail – MBTA Station



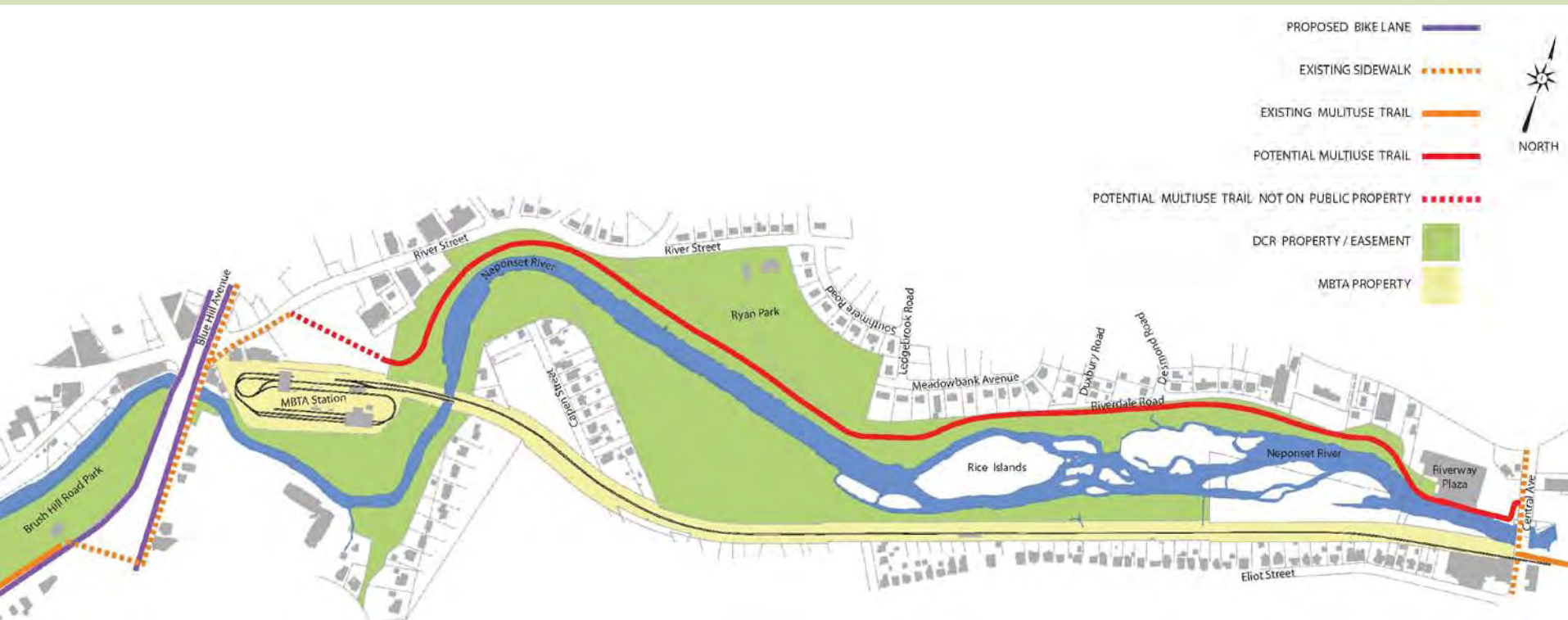
View 1



View 2

# OPTION C

## Primary Trail - North of Neponset River

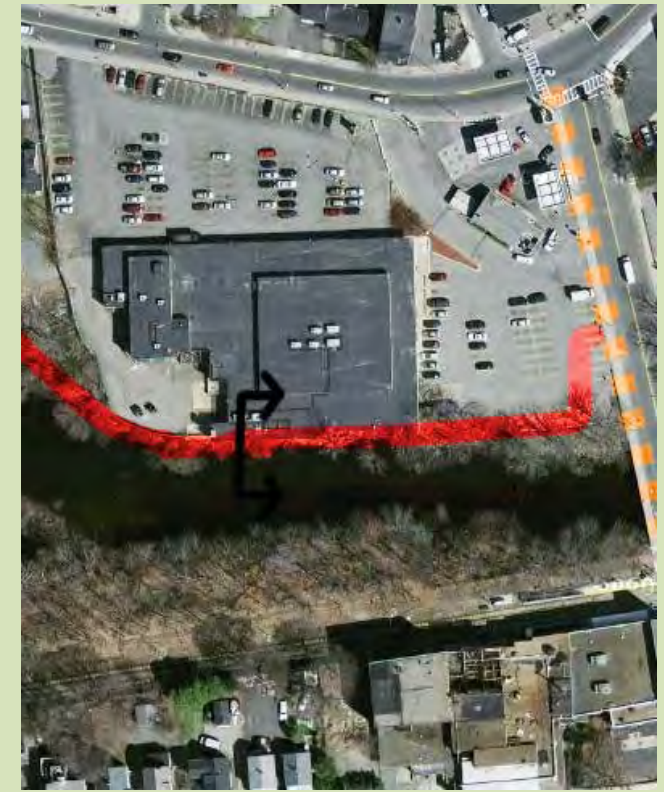


# OPTION C

## Northern Trail - Section



- Boardwalk along building
- Allows river views
- Pathway on private property



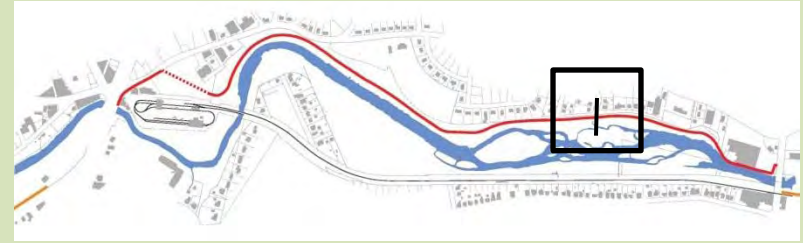
# Cantilevered Walkway



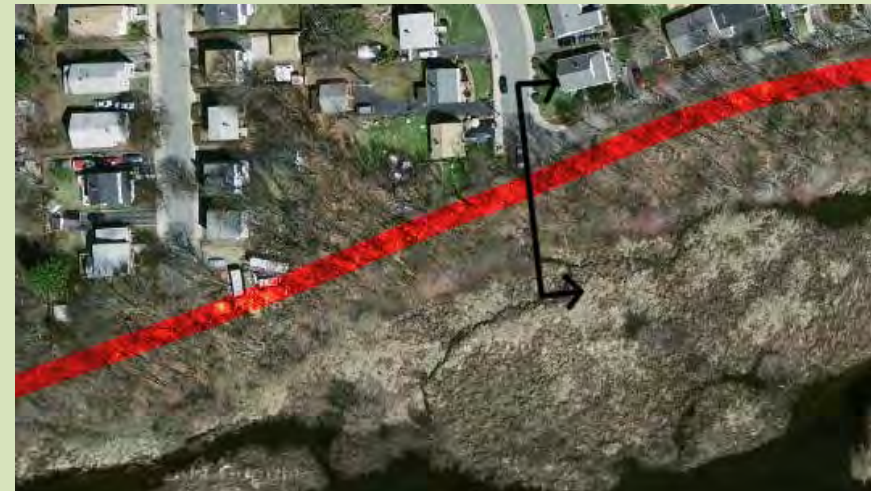


# OPTION C

## Northern Trail - Section

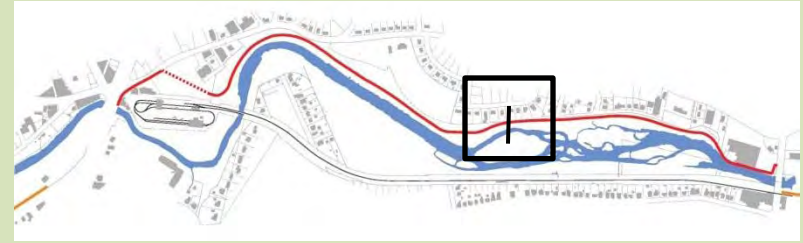


- Separated from housing by fencing and planting
- Requires tree removal
- Disturbs archaeologically sensitive area



# OPTION C

## Northern Trail - Section

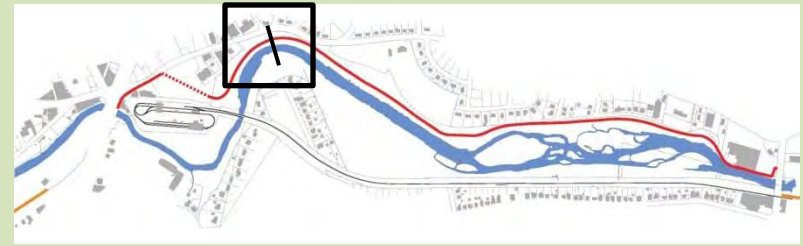


- Separated from housing by fencing and planting
- Requires tree removal
- Disturbs archaeologically sensitive area



# OPTION C

## North Trail - Section

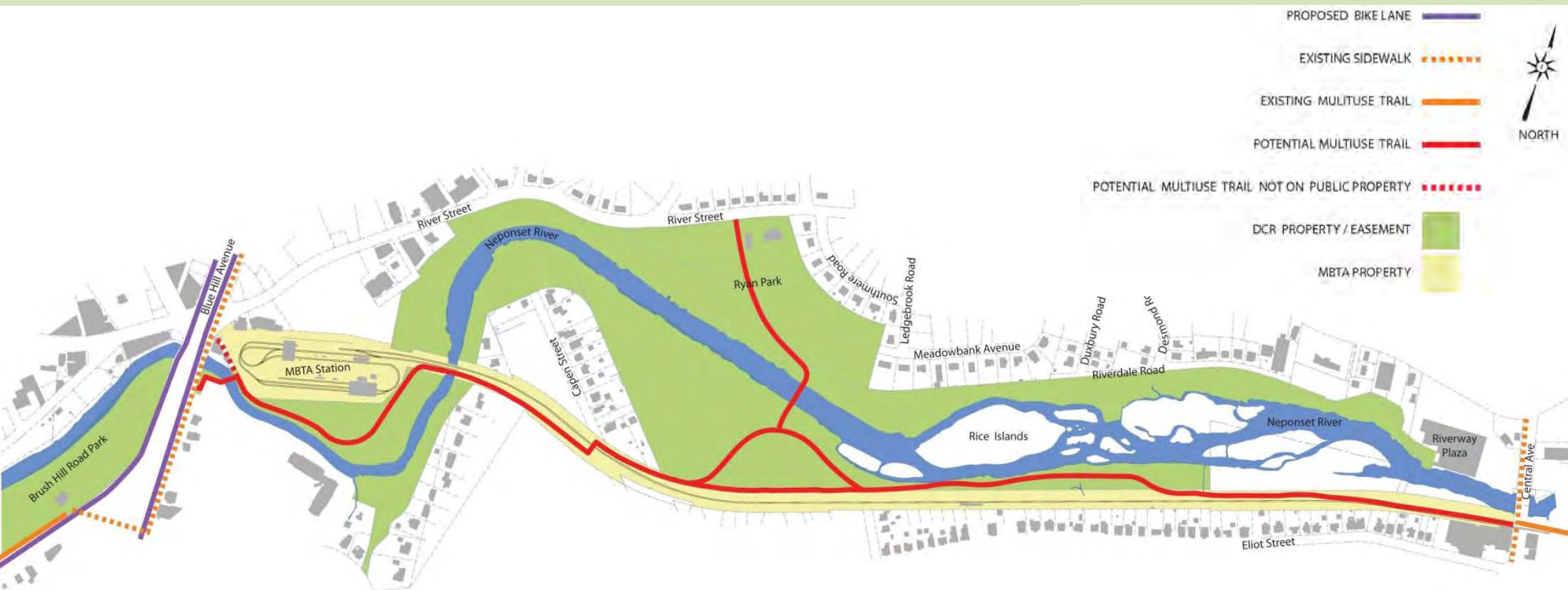


- Follows alignment of existing pathway
- Separated from housing by River Street
- Exits through MBTA Station and bus way and then onto narrow River St
- Disturbs archaeologically sensitive areas
- Requires tree removal
- Impacts Flood Zone



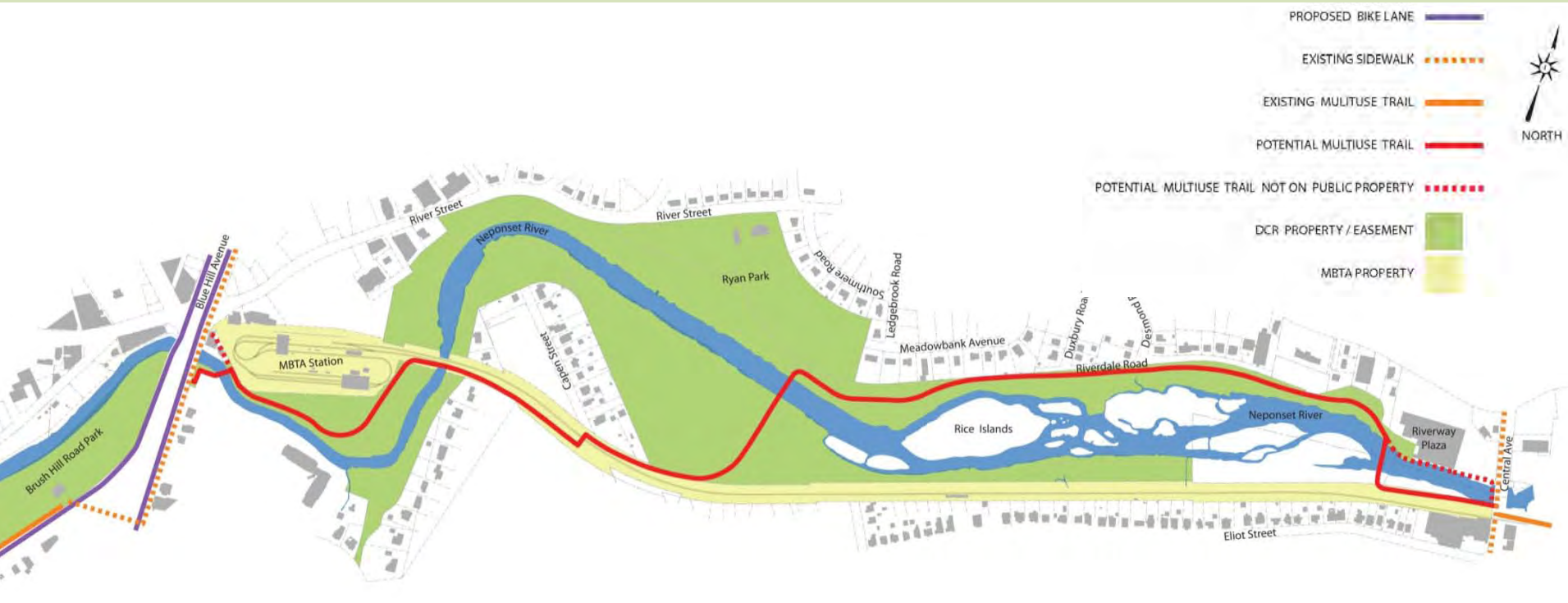
# OPTION D

## Primary Trail - South of Neponset River with Connection to North Side of River



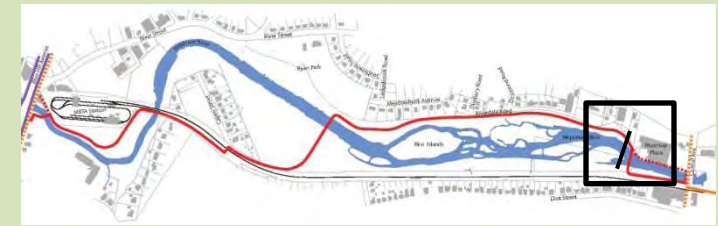
# OPTION E

## Primary Trail North and South of Neponset River



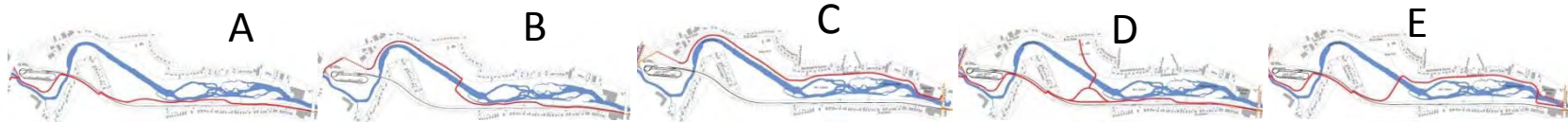
# OPTION E

## North/South Trail - Section



- Continues the existing trail across Central Avenue
- Follows the trolley line for safety
- Avoids Boardwalk along Rite Aide
- Separated from houses by railway
- Bridge to cross the Neponset River
- Separated from houses by fencing and vegetation

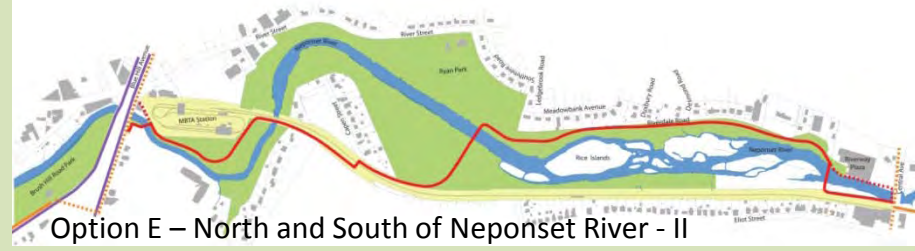
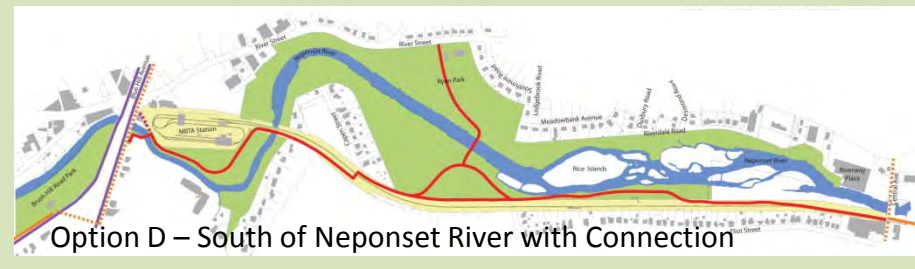
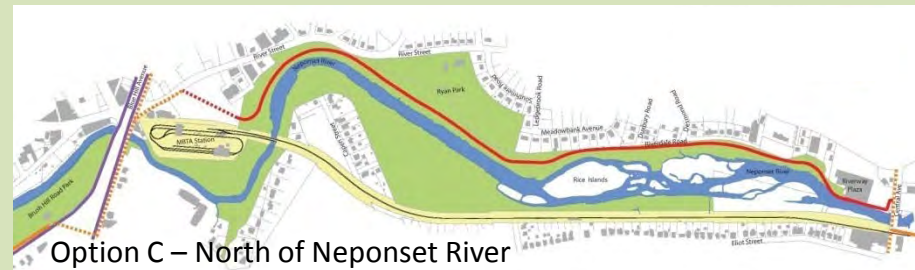
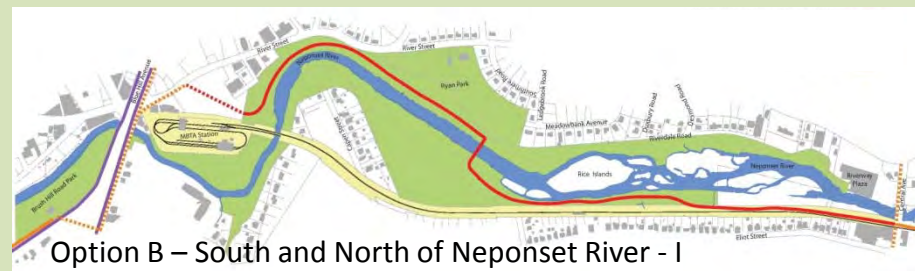




	A	B	C	D	E
Ease of connection to adjoining multi-use paths	✓			✓	✓
Access to water and river views		✓	✓		✓
Highest Safety & Security trail users - Visibility	✓			✓	
Highest Safety & Security trail users - Access			✓		✓
Highest Safety & Security adjacent property owners	✓	✓		✓	
Ability to avoid river crossings (permitting)			✓		
Minimizes major tree removal and impacts to undisturbed areas	✓			✓	
Avoids impacts to archaeologically sensitive zones	✓			✓	
Minimizes impacts to flood zone	✓			✓	✓
Ease of maintenance	✓	✓		✓	
Lower Cost	✓	✓	✓		
Open Space Connections		✓	✓	✓	✓
Lower risk of soil contamination along the route			✓		✓
Equity for path users on both sides of the river		✓		✓	✓
Ability to avoid private property	✓			✓	✓

# Discussion

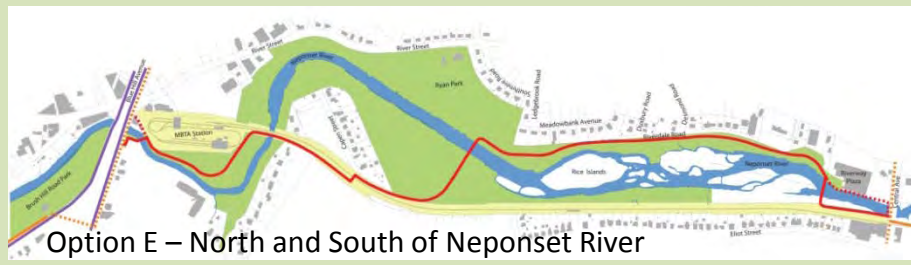
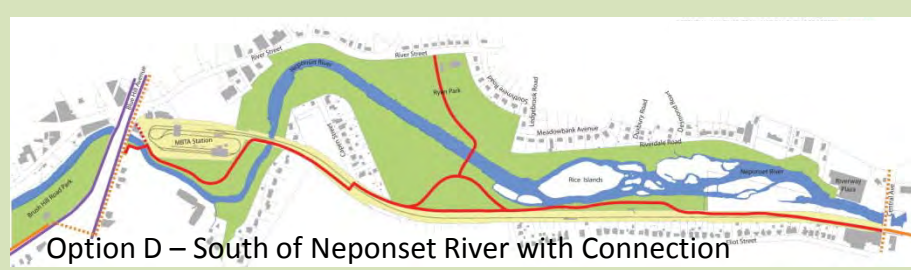
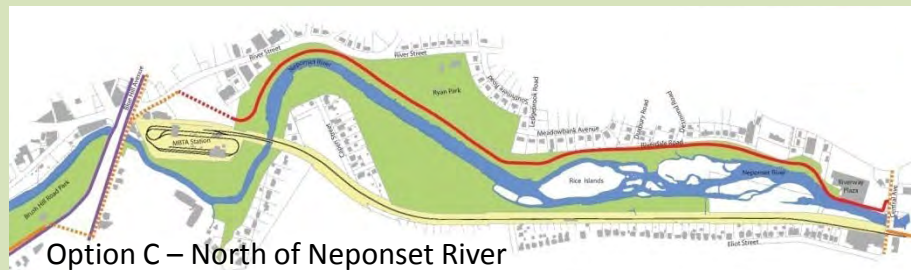
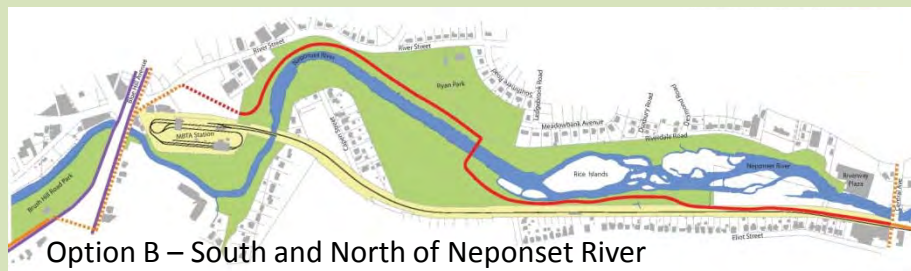
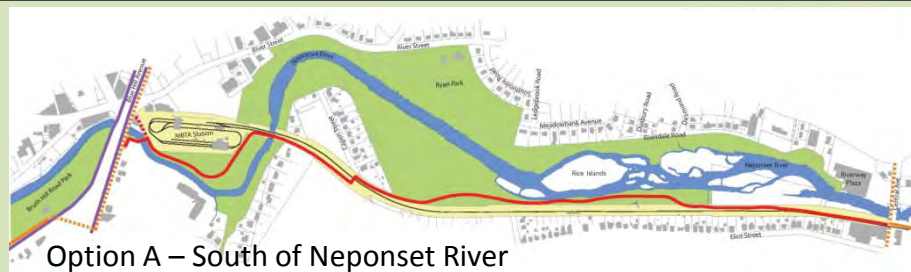
- Evaluation of Options
  - Ease of connection to adjoining multi-use pathways
  - Access to water and river views
  - Highest safety and security for trail users – Visibility
  - Highest safety and security for trail users – Access
  - Highest safety and security for adjacent property owners
  - Ability to avoid river crossings (Permitting)
  - Minimizes major tree removal and impacts to undisturbed areas
  - Avoids impacts to archaeologically sensitive zones
  - Minimizes impacts to flood zone
  - Ease of maintenance
  - Lower Cost
  - Open space connections
  - Lower risk of contamination
  - Equity for path users on both sides of the river
  - Avoids private property
  
- Other Considerations/Likes/Dislikes





# Discussion Questions

- Are there other considerations to be added to the matrix?
- What do you like about any of the alternatives?
- What do you dislike about any of the alternatives?
- Other?



# Commonwealth Investment in the Neponset River Reservation

- DCR has already made an investment of \$7 million for the Neponset River Trail
- The additional cost for the construction of the Neponset Trail between Central Avenue and Mattapan Square is:

\$3 Million - \$4 Million

- DCR has also made a significant financial investment in the following parks along the trail:
  - Pope John Paul Park
  - Neponset Park
  - Neponset Salt Marsh Restoration
  - Ryan Playground
  - Kennedy Playground and Gardens
  - Field Office Park
  - Martini Shell Park



# Central Avenue to Mattapan Square

## Overall Project Schedule and Next Steps

- Master Plan Complete – 2006
  - Neponset Open House– March 8, 2006
  - Public Meeting – April 26, 2006
- Neponset River Trail Final Design and Permitting 2010
  - Public Meeting
    - 7:30 pm to 9:00 pm in the Foley Senior Residences dining room*
    - 249 River Street in Mattapan*
  - Site Walk – Early June 2010
  - Public Comment Period Ending June 25<sup>th</sup>
  - Milton Conservation Commission
  - Boston Conservation Commission
  - Stake Holders Updates/Additional Public Meetings
- Construction to be Determined

# Staying Informed/Providing Input

- Staffing a dedicated phone line, where the public can call to register concerns, questions, or suggestions. The phone number is 617-626-4974
- Communicating via an email account, to which the public can write to register concerns, questions, or suggestions. The account is [DCR.Updates@state.ma.us](mailto:DCR.Updates@state.ma.us)
- Posting information on DCR's website [www.mass.gov/dcr](http://www.mass.gov/dcr)